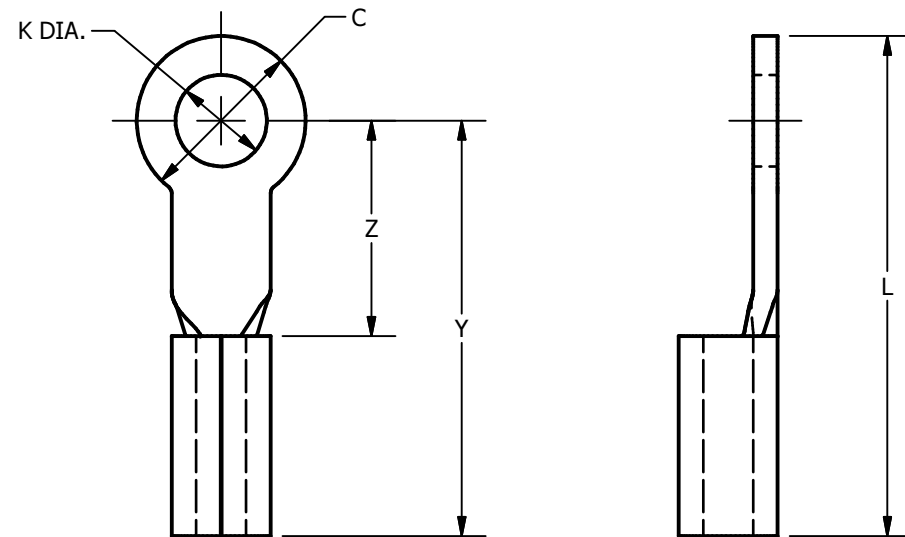


ITEM NUMBER	CATALOG NO.	WIRE RANGE	STUD SIZE	K DIA.	C	L	Y	Z	RATCHET TOOLING	NON-RATCHET TOOLING	STRIP LENGTH
516300	T184	22-18 AWG	3-4	0.12	0.25	0.64	0.52	0.26	MRE1022B, MR20, MR8G98, Y8MRB-1	Y10D, Y1022	9/32"
516304	T186		4-6	0.15	0.25	0.64	0.52	0.26			
516308	T188		6-8	0.17	0.31	0.76	0.61	0.35			
516312	T1810		8-10	0.20	0.31	0.76	0.61	0.35			
516316	T1814		1/4	0.27	0.40	0.95	0.75	0.49			
516340	T18516		5/16	0.33	0.45	0.95	0.73	0.47			
615326	T1838		3/8	0.39	0.53	1.04	0.78	0.52			
516232	T144	20-14 AWG	3-4	0.12	0.25	0.66	0.54	0.28			
516236	T146		4-6	0.15	0.25	0.66	0.54	0.28			
516240	T148		6-8	0.17	0.31	0.76	0.61	0.35			
516244	T1410		8-10	0.20	0.31	0.76	0.61	0.35			
516248	T1414		1/4	0.27	0.45	0.95	0.73	0.47			
516260	T14516		5/16	0.33	0.45	0.95	0.73	0.47			
516252	T1438		3/8	0.39	0.53	1.03	0.77	0.51			
516200	T106	12-10 AWG 5	4-6	0.15	0.38	0.82	0.63	0.29			
516204	T108		6-8	0.17	0.38	0.82	0.63	0.29			
516208	T1010		8-10	0.20	0.38	0.82	0.63	0.29			
516212	T1014		1/4	0.27	0.46	0.96	0.73	0.39			
516215	T10516		5/16	0.33	0.53	1.01	0.75	0.41			
516216	T1038		3/8	0.40	0.58	1.07	0.78	0.44			



NOTES:

1. MATERIAL: COPPER
2. FINISH: TIN PLATED
3. ALL SIZES ARE UL LISTED TO UL 486A-486B WIRE CONNECTING DEVICES.
4. ALL SIZES ARE UL LISTED TO CSA 22.2 NO.65 WIRE CONNECTING DEVICES

5. UL LISTED FOR 14-10 AWG WHEN INSTALLED WITH MR8G98.

HYLUG™			
ITEM NO: SEE TABLE			
CAT. NO: T-- (SEE TABLE)			
DRAWN BY:			
CHECKER:			
DSN APRVL:			
MFG APRVL:			
QA APRVL:			
MKT APRVL:			
PROD FAM:		DRAWING NO	REV
PROJECT #:	SIZE	30024807	A
DOCUMENT TYPE: SALES	B		
REL LEVEL: Released			